

**Calico**

# BASK

Tear Sheet



Donec traces the interplay of architecture, light, and shadow.



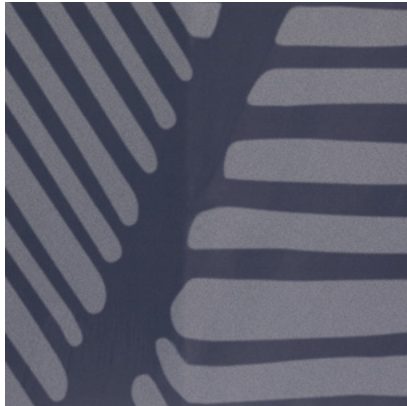
BUFF



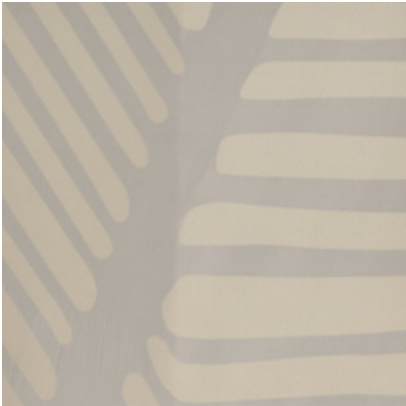
FIRSTLIGHT



HOURLASS



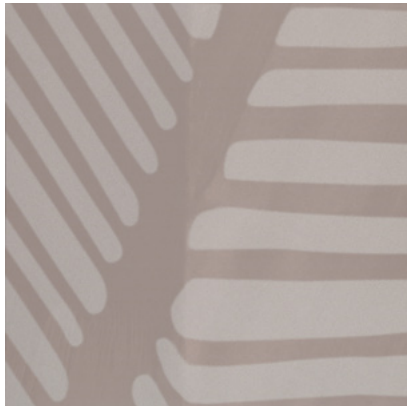
NOCTURNE



STERLING



STRIATE

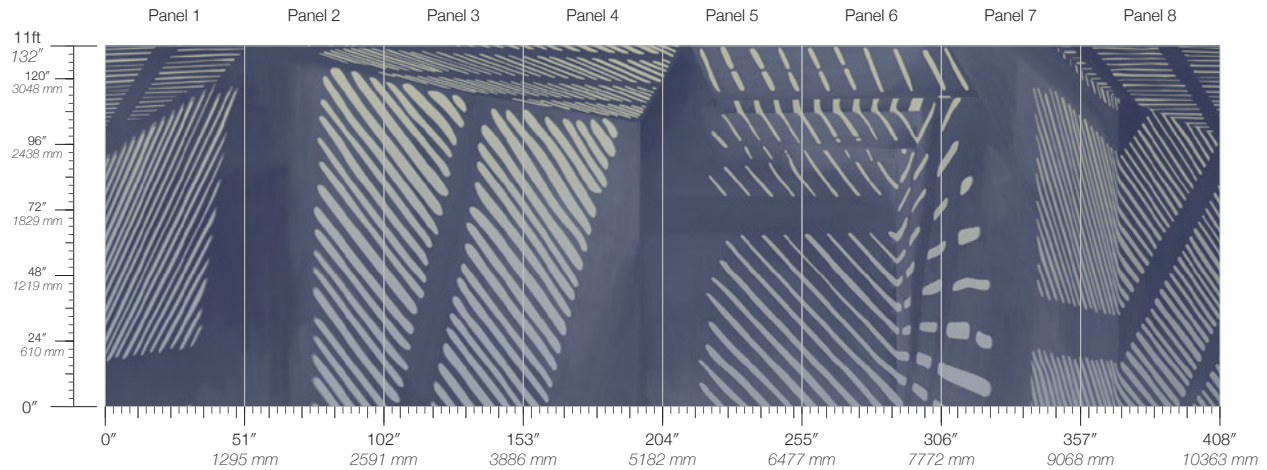


SUNSET



# Bask Nocturne

Suitable for residential and commercial projects



**COLOR**  
Nocturne

**ITEM**  
5404

**CONTENT**  
Type II Vinyl

**PANEL WIDTH**  
51" / 1295 mm trimmed

**PANEL HEIGHT**  
132" / 3353 mm standard

**REPEAT**  
Non-repeating

**STOCK**  
Made to order

**LEAD TIME**  
4 weeks to print

**MINIMUM**  
1 panel

**PRICE**  
Available upon request

**ORIGIN**  
USA

**DETAILS**  
Custom options available

**ENVIRONMENTAL**  
Recycled Content  
Phthalate Free  
Low VOC  
HPD Available

**SPECS**  
Commercial Vinyl face  
Polyester/Cotton woven backing  
20 oz per linear yard  
620 g per linear meter  
Dappled surface texture

**TESTING**  
(US) ASTM E84 Adhered Class A  
(EU) EN 15102 Class B, s2  
(CN) CAN/ULC-S102.2 Class A  
CCC-W-408D Type II  
WA Specification W-101 Type II  
NFPA 286 Corner Burn Test Class A

**MAINTENANCE**  
Water-based cleanser

**CONTACT**  
sales@calicowallpaper.com  
+1 718 243 1705  
57 Lispenard Street  
New York, NY 10013 USA

**DISCLAIMER**  
Refer to our website to see the full mural artwork. Reference the physical sample for color and texture. Panel maps represent mural artwork only.